

Walnut Hills

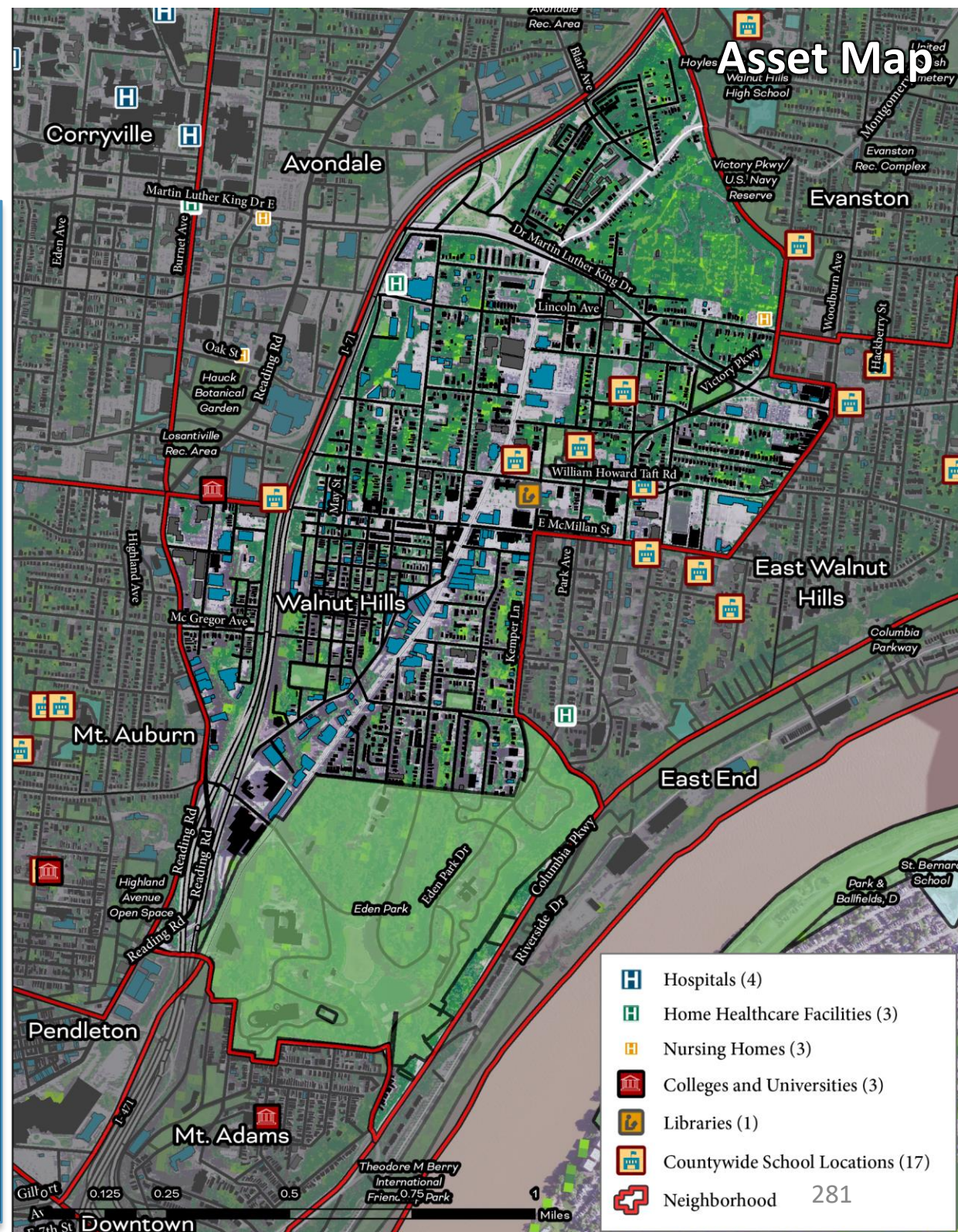
Cincinnati Neighborhood Profile

Walnut Hills is a predominantly Black neighborhood (67%) with a population of 6,275 residents. The neighborhood has a community council (Walnut Hills Area Council) and a community development corporation (Walnut Hills Redevelopment Foundation, Inc.). Walnut Hills' most recent community plan is the Walnut Hills Reinvestment Plan (2017).

Life expectancy in Walnut Hills is 69.4 years (ranked 41st out of neighborhoods assessed). Disease prevalence is relatively high. This includes diabetes (23.5%, ranked 44th), high blood pressure (47.9%, ranked 43rd), kidney disease (5.2%, ranked 47th), obesity (48.7%, ranked 40th), and asthma (14.1%, ranked 39th). Of Walnut Hills residents, 17.5% lack health insurance (ranked 45th), 5.7% of residents have independent living difficulties (ranked 48th), and 20.7% live with disability (ranked 45th).

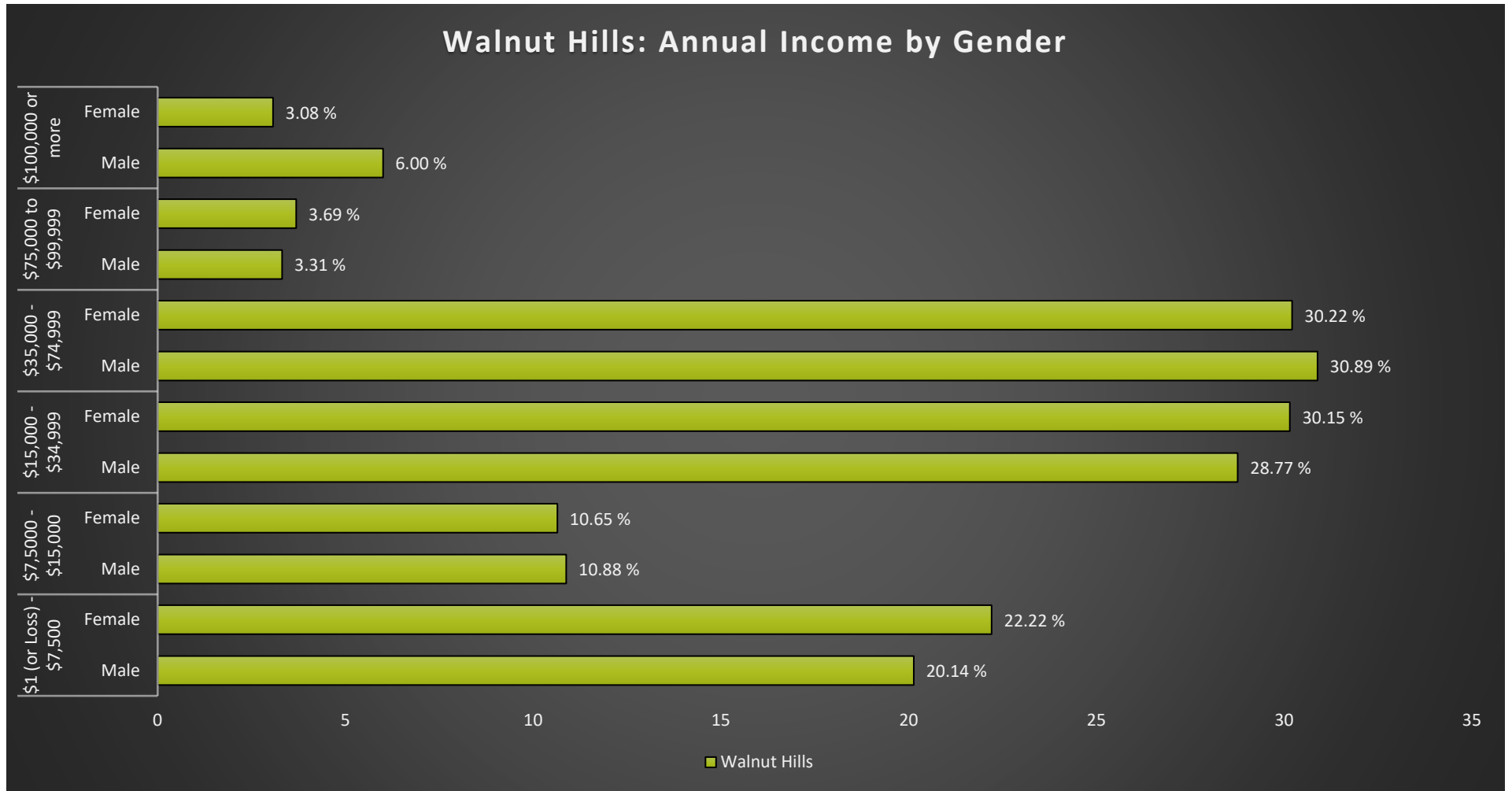
Walnut Hills ranks 36th in tree canopy coverage (13.1%) and 39th in greenness of land surface (39.8%). Walnut Hills ranks 10th in percent of land in parks and greenspaces (21.2%). The neighborhood ranks 33rd in heat island exposure with a heat index of 0.31. Residents face moderate to extreme exposure to built environmental hazards relative to the other neighborhoods, including extreme exposure to diesel particulates in the air and cancer and respiratory disease risk from air pollution. In addition, there is very high exposure to hazardous waste treatment and disposal facilities and ozone concentration as well as high proximity to superfund sites and high PM2.5 Levels in the air.

Walnut Hills has an educational attainment of 19. Of its residents, 41.4% live in poverty (ranked 37th) and 41.2% of households receive SNAP benefits (ranked 40th). The majority of housing units are renter-occupied (76.4%, ranked 39th), and 38.7% of renters spend 30% or more of their income on housing costs. The average energy cost is 7.2% of residents' income (ranked 43rd). Walnut Hills is 46th in vehicle access and 23.6% of residents lack a vehicle.



Walnut Hills

Cincinnati Neighborhood Profile



Walnut Hills Notable Indicators		
<i>Percent Land in Parks and Greenspaces</i>	<i>Life Expectancy</i>	<i>Cancer and Respiratory Risk from Air Pollution</i>
21.2% (Ranked 10th highest)	69.4 years (Ranked 41st highest)	Extreme

Walnut Hills

Cincinnati Neighborhood Profile

People			
Indicator	Rank	%	# of Persons
Population	-	-	6,275
Persons over 65	31	14.6%	918
Persons 17 and Under	15	18.8%	1,181
Children Living w/ Grandparents	25	1.4%	88
Race/Ethnicity:			
Black	-	67.0%	4,203
white	-	24.2%	1,520
Asian	-	1.4%	87
Other	-	7.4%	465
Latinx	-	2.8%	174
Persons 5 and Older in Households w/ Limited English Ability	33	1.3%	80

Health			
Indicator	Rank	Value	
Life Expectancy	41	69.4 years	-
Disease Prevalence Estimates:	Rank of % w/Condition	% with Condition	Persons with Condition
Asthma	39	14.1%	884
Cancer	25	5.7%	358
Diabetes	44	23.5%	1,472
High Blood Pressure	43	47.9%	3,003
Heart Disease	44	10.8%	679
Kidney Disease	47	5.2%	329
Obesity	40	48.7%	3,055
Lack of Health Insurance	37	17.5%	1,095
Persons w/ Independent Living Difficulty	48	5.7%	355
Persons Living w/ Disability	45	20.7%	1,298

Ecosystems and Infrastructure		
Indicator	Rank	Value
Tree Canopy Coverage	36	13.1%
Greenness of Land Surface	39	39.8%
Percent Land in Parks and Greenspaces	10	21.2%
Impervious Surface	39	50%
Heat Island Exposure	33	0.76
Walkability	-	Above Average to Most Walkable
Persons w/ Low-Income and Low Food Access	29	43.8%
Transit Accessibility	-	Excellent
Daytime Population vs. Resident Population	41	221.6%
Commuters Leaving Each Day	-	1,394
Commuters Using Public Transit	37	13.2%

Walnut Hills

Cincinnati Neighborhood Profile

Socio-Economic Indicators			
Indicator	Rank	%	#
Persons Living in Poverty	37	41.4%	2,599
SNAP Recipient Households	40	41.2%	1,438
Educational Attainment:			
Less than High School	-	12.5%	-
HS or Equivalent	-	20.8%	-
Some College	-	16.3%	-
Associate's Degree	-	4.9%	-
Bachelor's Degree or Higher	-	20.5%	-
Educational Attainment Index	19	0.45	-
Extreme Housing Burdens:			
Renter-Occupied Housing (as % of All Housing Units)	39	76.4%	2,666
Renters Spending 30% of Income or More on Rent + Utilities	38	38.7%	1,352
Renters Spending 50% of Income or More on Rent + Utilities	37	20.3%	707
Homeowners Spending 30% of Income or More on Mortgage + Utilities	26	19.1%	158
Average Energy Costs (as % of Income)	43	7.2%	-
Persons without Vehicle Access	46	23.6%	1,479

Built Environmental Hazards		
Indicator	Relative Exposure Level	Value
Traffic Exposure	Extreme	-
Potential Lead Paint Exposure (Houses Built pre-1960)	High	67.70%
Cancer Risk from Air Pollution	Extreme	-
Respiratory Disease Risk from Air Pollution	Extreme	-
Proximity to Water Pollution Sources	Moderate	-
PM2.5 Levels in Air, µg/m3	High	9.72
Ozone Concentration, ppb	Very High	46.73
Diesel Particulate in Air, µg/m3	Extreme	1.26
Proximity to Superfund Sites	High	-
Proximity to Potentially Toxic Industrial Activity	Moderate	-
Proximity to Hazardous Waste Treatment and Disposal Facilities	Very High	-

Neighborhood Planning	
Indicator	Description
Community Councils	Walnut Hills Area Council
Community Development Corporations	Walnut Hills Redevelopment Foundation, Inc.
Community Plans	Walnut Hills Reinvestment Plan (2017)